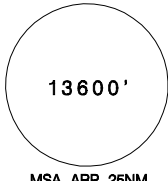
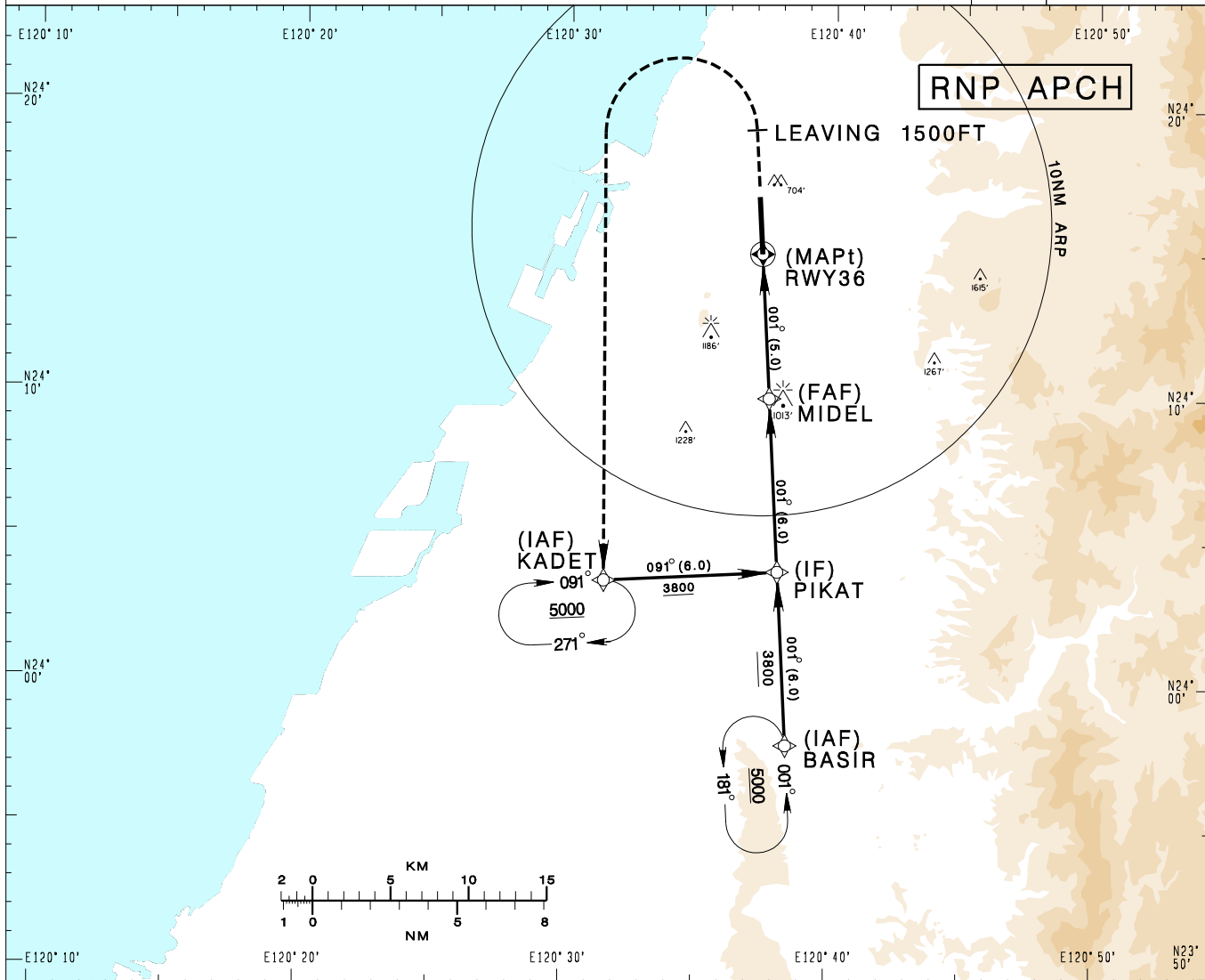


臺中/清泉崗機場
TAICHUNG/CINGCYUANGANG AD

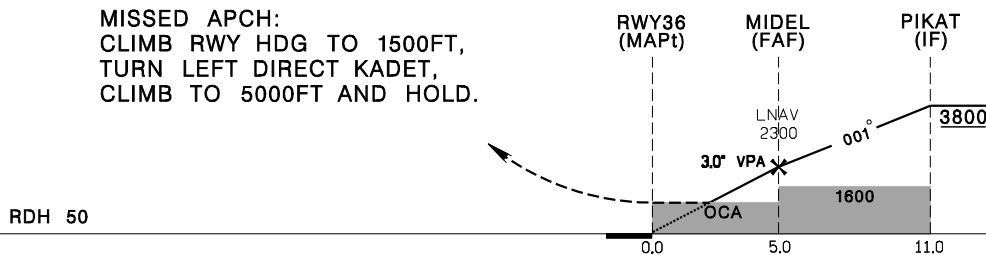
RCMQ
RNP RWY36

TAIPEI APP 130.1 129.6	TAICHUNG TWR 118.75 120.25	ATIS 127.75	VAR 5°W-2022		
Apt Elev: 665'	Rwy36 THR Elev: 663'	Trans Level: FL130			Trans Alt: 11,000'
BEARINGS ARE MAGNETIC; DISTANCES ARE NAUTICAL MILES; ELEVATIONS, HEIGHTS IN FEET					



DIST (NM) to THR 36	1.1	2	3	4	5
DIST (NM) to Next WPT	1.1	2	3	4	MIDEL
ADVISORY ALT	1070	1350	1670	1990	2300

MISSED APCH:
CLIMB RWY HDG TO 1500FT,
TURN LEFT DIRECT KADET,
CLIMB TO 5000FT AND HOLD.



MINIMA (OCA IN FT, VIS IN M, OCH IN FT)

CATEGORY		A	B	C	D
LNAV/VNAV	STRAIGHT IN	1040/1000 RVR1000 377	1040/1000 RVR1000 377	1040/1000 RVR1000 377	1040/1000 RVR1000 377
	STRAIGHT IN (ALS OUT)	1040/1700 377	1040/1700 377	1040/1700 377	1040/1700 377
LNAV	STRAIGHT IN	1060/1200 RVR1200 395	1060/1600 395	1060/1600 395	1060/1600 395
	STRAIGHT IN (ALS OUT)	1060/1700 395	1060/1700 395	1060/1800 395	1060/1800 395

NOTE
BARO-VNAV NOT AUTHORIZED
BELOW 0° C.

CHANGES: UPDATE MAG VAR; MAG TRACK